

# Manatee County VOTER GUIDE

**Michael Bennett**  
Supervisor of Elections

MANATEE COUNTY  
SUPERVISOR OF ELECTIONS  
108

***Do Your Part to Protect Our Freedom:  
Register & Vote!***

**Manatee County Supervisor of Elections**

600 301 Blvd. W., Suite 108, Bradenton, Florida 34205-7946

PH: 941-741-3823 • FX: 941-741-3820

[VoteManatee.gov](http://VoteManatee.gov) • [Info@VoteManatee.gov](mailto:Info@VoteManatee.gov)





# Table of Contents

Election Dates ..... 1

Voter Rights and Responsibilities ..... 2

Who Can Register to Vote? ..... 3

Voter Information Changes ..... 4

3 Ways to Register ..... 5

3 Ways to Vote ..... 6

Vote By Mail ..... 7

Election Day Voting ..... 8

What to Expect at the Polls ..... 9

Voting Machines ..... 10

Provisional Ballots ..... 11

Florida’s Closed Primary Elections ..... 12

Registering with Special Circumstances ..... 13

Become a Poll Worker ..... 14

Website ..... 15

Placement on Inactive Voter Rolls and Removal ..... 16

Registration Is a Public Record ..... 17

You Can Only Register to Vote in One State ..... 17

Poll Watchers ..... 18

Signature Updates ..... 18

Early Voting ..... 19

Violations ..... 19



## OFFICE INFORMATION

**Supervisor of Elections:** Michael Bennett  
**Office Location:** 600 301 Blvd. W., Suite 108  
 Bradenton, FL 34205-7946  
**Mailing Address:** PO Box 1000, Bradenton, FL 34206-1000  
**Phone:** 941-741-3823  
**Fax:** 941-741-3820  
**Website:** VoteManatee.gov  
**Email:** Info@VoteManatee.gov  
**Office Hours:** 8:30 AM – 5:00 PM Monday – Friday

## 2022 ELECTIONS CALENDAR

### TOWN OF LONGBOAT KEY

General Election  
 Election Day – March 8, 2022  
 Deadline to Register to Vote  
 February 7, 2022

### PRIMARY ELECTION

Election Day – August 23, 2022  
 Deadline to Register to Vote  
 July 25, 2022

### TRAILER ESTATES ELECTION

Election Day – December 6, 2022  
 Deadline to Register to Vote  
 Owner of Record  
 November 6, 2022

### MUNICIPAL ELECTIONS

Election Day – November 8, 2022  
 Deadline to Register to Vote  
 October 11, 2022

### GENERAL ELECTION

Election Day – November 8, 2022  
 Deadline to Register to Vote  
 October 11, 2022

### Early Voting for All Elections — To Be Announced

Polls will be open on Primary and General Elections from 7:00 AM to 7:00 PM local time  
 (See Sections 97.055, 100.011 and 101.657, Florida Statutes)

## 2023 ELECTIONS CALENDAR

### TOWN OF LONGBOAT KEY

Election Day – March 21, 2023  
*Subject to Change*  
 Deadline to Register to Vote  
 February 20, 2023

### MUNICIPAL ELECTIONS

Election Day – November 7, 2023  
 Anna Maria, Bradenton Beach,  
 Holmes Beach  
 Deadline to Register to Vote  
 October 9, 2023

### BAYSHORE GARDENS

Election Day – December 5, 2023  
 Deadline to Register to Vote  
 November 6, 2023

### TRAILER ESTATES

Election Day – December 5, 2023  
 Deadline to Register to Vote  
 Owner of Record  
 November 5, 2023



# Voter Rights and Responsibilities

## VOTER'S BILL OF RIGHTS

Each registered voter in this state has the right to:

1. Vote and have his or her vote accurately counted.
2. Cast a vote if he or she is in line at the official closing of the polls in that county.
3. Ask for and receive assistance in voting.
4. Receive up to two replacement ballots if he or she makes a mistake prior to the ballot being cast.
5. An explanation if his or her registration or identity is in question.
6. If his or her registration or identity is in question, cast a provisional ballot.
7. Written instructions to use when voting, and, upon request, oral instructions in voting from elections officers.
8. Vote free from coercion or intimidation by elections officers or any other person.
9. Vote on a voting system that is in working condition and that will allow votes to be accurately cast.

You may have other voting rights under state and federal laws. If you believe your voting rights have been violated, please contact the Florida Department of State's Voter Fraud Hotline at (877) 868-3737.

DSDE20

## VOTER'S RESPONSIBILITIES

Each registered voter in this state should:

1. Familiarize himself or herself with the candidates and issues.
2. Maintain a current address with the Supervisor of Elections.
3. Know the location of her or his polling place and its hours of operation.
4. Bring proper identification to the polling station.
5. Familiarize himself or herself with the operation of the voting equipment in his or her precinct.
6. Treat precinct workers with courtesy.
7. Respect the privacy of other voters.
8. Report any problems or violations of election laws to the Supervisor of Elections.
9. Ask questions, if needed.
10. Make sure that his or her completed ballot is correct before leaving the polling station.

DSDE21

**NOTE TO VOTER:** Failure to perform any of these responsibilities does not prohibit a voter from voting.



# Who Can Register to Vote?

## Am I eligible to register to vote in Manatee County, Florida?

You must:

- Be a U.S. Citizen
- Be a Florida resident and live in Manatee County
- Be 18 years old (*you may pre-register at 16 or 17*)
- Not currently be adjudicated mentally incapacitated with respect to voting in Florida or any other state
- Not have been convicted of a felony, or if you have a felony conviction, you must have had your right to vote restored

## Voting Rights Restoration

Starting January 8, 2019, convicted felons who have completed their sentences, including parole and probation, will have their voting rights automatically restored and will be eligible to register to vote.

**EXCEPTION:** Felons convicted of murder or sexual offenses are not eligible unless the Florida Commission on Offender Review, Office of Executive Clemency restores their voting rights.

## How do I know if my voting rights have been restored?

The voting rights for most convicted felons in Florida are automatically restored when all terms of your sentencing are completed.

If you are uncertain about the status of your sentencing obligations, the agencies listed below have resources to assist you.

- **Clerk of the Circuit Court and Comptroller** (*in the county where sentenced*)
- **Florida Department of Corrections** (850) 488-5021 / [www.dc.state.fl.us](http://www.dc.state.fl.us)
- **Florida Commission on Offender Review, Office of Executive Clemency:**

**Online:** [www.fcor.state.fl.us](http://www.fcor.state.fl.us)

**Phone:** (800) 435-8286 or (850) 488-2952

**Fax:** (850) 488-0695

**Mail:** 4070 Esplanade Way, Tallahassee, FL 32399-2450



# Voter Information Changes

## CONTACT US!

### MICHAEL BENNETT, MANATEE COUNTY SUPERVISOR OF ELECTIONS

**Hours** Monday through Friday 8:30 am to 5:00 pm

**Address** 600 301 Blvd. W., Suite 108, Bradenton, FL 34205-7946

**Phone** 941-741-3823

**Fax** 941-741-3820

**Web** VoteManatee.gov

**Email** Info@VoteManatee.gov

**Mail** PO Box 1000, Bradenton, FL 34206-1000

 Manatee-County-Supervisor-Of-Elections



Check your voter status anytime at [VoteManatee.gov](http://VoteManatee.gov)! Click on "Am I Registered?"

After registering, you must keep your registration information up to date. Your current name, address, and signature are critical for your vote to count. To update your voter information, choose from the following options:

### Signature Change / Update (VERY IMPORTANT)

We use voter signatures to verify your identity on Petitions, Provisional Ballots, and Vote By Mail ballots. For your vote to count, we need an up-to-date signature on file. Update your signature by completing a Voter Registration form and sending it to us. Forms are available on our website at [VoteManatee.gov](http://VoteManatee.gov).

### Address Change (no deadline)

- Go to [VoteManatee.gov](http://VoteManatee.gov), click on *Voter Information, Updating Your Voter Information*.
- Call our office.
- Submit a completed Florida Voter Registration Application.
- Submit a signed written notice that includes your name.

### Party Affiliation Change (deadline is 29 days before an election)

- Submit a completed Florida Voter Registration application that should be signed and mailed or delivered in person to the Supervisor of Elections office.
- Or update your information online at [RegisterToVoteFlorida.gov](http://RegisterToVoteFlorida.gov).

### Name Change (no deadline)

- Submit a completed Florida Voter Registration application that should be signed and mailed or delivered in person to the Supervisor of Elections office.
- Or update your information online at [RegisterToVoteFlorida.gov](http://RegisterToVoteFlorida.gov).



# 3 Ways to Register

Registration applications for new voters must be completed and submitted 29 days before an election to be effective for the upcoming election. Go to [VoteManatee.gov](http://VoteManatee.gov) (click *Register to Vote*) for more info on how to register to vote. Or, contact our office.

## 1 Try Online Voter Registration!

You can register to vote or update your existing registration online at [VoteManatee.gov](http://VoteManatee.gov), click on *Register to Vote*.

Voter Registration requires a Florida driver's license or Florida identification card and the last four digits of your Social Security number.



## 2 Register In Person

Register to vote in person at the Manatee County Supervisor of Elections office, at a voter registration agency, or at a community outreach event.

Voter registration agencies in Manatee County include:

- Department of Highway Safety & Motor Vehicles
- Manatee County Tax Collector offices
- Public assistance offices
- Offices that serve persons with disabilities
- Public library branches
- Public education institutions

## 3 Register By Mail

To get a Florida Voter Registration Application:

- Visit our website to print the application.
- Visit our office or a voter registration agency.
- Or, call our office to have an application mailed to you.

Mail your completed application to:

**Michael Bennett**

**Supervisor of Elections, Manatee County**

PO Box 1000, Bradenton, FL 34206-1000



# 3 Ways to Vote

## 1 Vote By Mail

Contact our office online, in person, by phone, or by mail to request your Vote By Mail ballot before Election Day.



## 2 Vote Early

Cast your ballot at any of our convenient locations before Election Day.



Go to [VoteManatee.gov](http://VoteManatee.gov) and click on *Vote By Mail & Early Voting* and then *Early Voting* to see locations.

## 3 Vote at Your Precinct

It's your last chance to vote! If you choose to vote on Election Day, you must cast your ballot at your assigned polling place. To find your polling place, call us or go to [VoteManatee.gov](http://VoteManatee.gov) (click on *Where Do I Vote?*).



# Vote By Mail Ballot

## Requesting a Vote By Mail ballot is easy!

**In Person** 600 301 Blvd. W., Suite 108, Bradenton, FL 34205-7946  
**Open:** Monday through Friday 8:30 am to 5:00 pm

**Call** 941-741-3823

**Web** [VoteManatee.gov](http://VoteManatee.gov) (click on *Vote By Mail*)

**Email** [Info@VoteManatee.gov](mailto:Info@VoteManatee.gov)  
(include your name, date of birth, FL drivers license or FL ID or last 4 digits of Social Security Number and address)

You may request your Vote By Mail ballot up to 10 days before an election. You may return your voted mail ballot to our office or drop it off with an election official at any Early Voting site during voting hours.

**NOTE:** Mail ballots are not accepted at the polls on Election Day.

To ensure your vote is counted,

- Make sure we have an up-to-date signature for you.
- The Manatee County Supervisor of Elections office must receive your ballot by 7:00 pm on Election Day.
- Carefully follow all instructions on your mail ballot.
- Sign the Voter's Certificate on the envelope with a good signature.
- Allow up to 5 business days if returning by mail.

Check the status of your mail ballot any time at [VoteManatee.gov](http://VoteManatee.gov)  
Click *Vote By Mail & Early Voting, Track Your Vote By Mail Ballot.*

### Has your signature changed since you first registered to vote?



**If so, you need to update your signature with our office or we may not be able to accept your ballot.**



# Election Day Voting

## Election Day is your last chance to vote!

If you choose to vote on Election Day, you must cast a ballot at your assigned polling location. Your **polling location** is a building that serves voters of one or more precincts. It is based on your **precinct**, which is a geographical area defined by overlapping governmental districts.

Your polling location and precinct number are listed on your Voter Information Card for your reference. Voter Information cards are mailed routinely to confirm new registrations, voter updates, or changes in precincts or polling locations.

**Note:** *Your Voter Information Card does not count as valid ID to vote.*

| Manatee County                           |   | Voter Information Card<br>Tarjeta De Información De Votante |                 |
|--|---|---|-----------------|
| <b>Karen Jones</b>                       |   | <b>ID#123456789</b>   |                 |
| 515 Mohican Drive<br>Bradenton, FL 34205 |   | DOB: Jan/20/1997<br>DOR: Aug/26/2016                        |                 |
| PARTY<br>PARTIDISTA                      | CONGRESS<br>CONGRESO  | SENATE<br>SENADO  | HOUSE<br>CAMARA |
| NPA                                      | 16  | 21  | 73              |
|  |   | 2   | 2               |
| PRECINCT NO.<br>NUM DE RECINTO           | POLLING LOCATION/SITIO DE VOTACION                                    |   |                 |
| <b>201</b>                               | <b>Bradenton Dreamcenter</b><br>1816 9th St. W<br>Bradenton, FL 34205 |   |                 |

### ACRONYM DESCRIPTION

|                         |   |
|-------------------------|---|
| <b>PARTY</b>            | Party You are registered as               |
| <b>CONGRESS</b>         | US House of Representatives               |
| <b>SENATE</b>           | Florida Senator                           |
| <b>HOUSE</b>            | Florida House of Representatives          |
| <b>COUNTY</b>           | County Commissioner District Number       |
| <b>SCHOOL</b>           | School Board District Number              |
| <b>CITY</b>             | City District or Ward                     |
| <b>POLLING LOCATION</b> | Name and address of your polling location |

**PRECINCT NO** Your Precinct number for Election Day

**REGISTRATION NUMBER** Voter registration I.D. number

## Avoid The Rush

Polls are open from 7:00 AM to 7:00 PM. The busiest voting times happen right at the opening and closing of the polls.

We suggest you vote between 10:00 AM – 4:00 PM to avoid long lines.

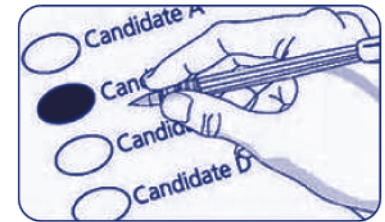


# What to Expect at the Polls

Voting should be a quick, satisfying experience. Ask a poll worker for assistance if needed.

Voters must present valid ID with a photo and signature. After verification, voters must sign the precinct register (an electronic pollbook). Then, voters receive a paper ballot and a secrecy sleeve.

Voters may bring their marked sample ballots or other materials for reference when marking their official ballot at the polls.



### 1. Fill in your ballot correctly.

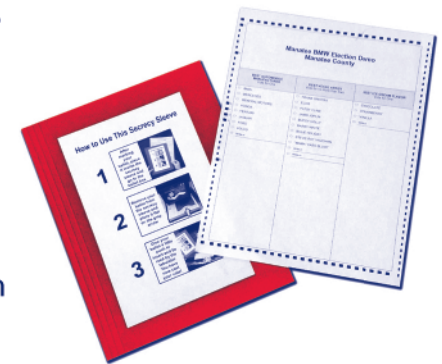
Completely fill in the oval to the left of the candidate or issue of your choice. For a write-in candidate, fill in the oval to the left and write the name on the line provided.

### 2. Review your ballot.

If you wish to change anything, ask a poll worker for a new ballot. You are allowed up to 3 attempts to properly mark your ballot.

### 3. Cast your ballot.

Place your ballot into the voting machine, wait for the machine to accept your ballot, and then return the secrecy sleeve to the poll worker. Exit the voting area.





# Voting Machines

## Express Vote

The ExpressVote is a Universal Voting System that combines paper-based voting with touch screen technology to create a breakthrough in voting solutions for Early Voting and on Election Day in precincts. As a Universal Voting System, ExpressVote allows all voters, including those with special needs, to cast their ballots privately and autonomously.



## DS200 Tabulator

The **DS200** precinct vote scanner and tabulator combines the best attributes of a paper-based ballot system with the flexibility and efficiency of the latest digital-image technology — taking traditional optical-scan vote tabulation to a new level. The



DS200 is the industry's most widely used digital precinct scanner. At Early Voting and on Election Day the DS200 will read and tabulate each ballot as it is inserted by the voter. Ballots printed from the ExpressVote machine will also be placed in this tabulator by the voter.



# Provisional Ballots

A Provisional Ballot is a voter protection tool for a voter whose eligibility to vote is uncertain. It allows the Supervisor of Elections office to count the voter's ballot after the office determines that the voter is eligible. **Voters may track their Provisional Ballot status at [VoteManatee.gov](http://VoteManatee.gov) or by contacting our office.**

Some Provisional Ballot voters may be required to submit additional eligibility documentation by the second day following the election to the Supervisor of Elections office for their ballot to be counted.

The Manatee County Canvassing Board decides if the Provisional Ballot will be counted when it meets on the third day following the election.

## **Provisional Ballots are often issued when:**

- The voter does not show proper ID when voting in person.
- The voter's name is not found in the precinct register (electronic pollbook).

## **Provisional Ballots are often not counted when:**

- The voter arrives to vote in the wrong polling location on Election Day.
- The voter did not register 29 days before the election.

For more information on Provisional Ballot voting, contact our office.



# Florida's Closed Primary Elections

You are not required to register with a political party. However, Florida is a closed primary state. That means you may only vote in a partisan contest in a Primary Election if you are a registered member of that political party.

**Political party affiliation changes must be submitted 29 days prior to the Primary Election.**

In a Primary Election, often there are many non-partisan offices up for election. Regardless of political party affiliation, voters may vote in these contests when they appear on the ballot.

## Universal Primary

When does a Universal Primary contest occur? A Universal Primary contest occurs when two candidates of the same political party affiliation appear on the Primary Election ballot and face no opposition in the General Election. In a Universal Primary contest, all eligible voters, regardless of political party affiliation, may participate.

In a General Election, voters may select the candidate of their choice regardless of political party affiliation.



# Registering with Special Circumstances

## Voting Rights Restoration

If you are a former convicted felon and you have completed all terms of your sentence, you are eligible to register to vote under s. 4, Art. VI of the State Constitution. To register to vote, visit [VoteManatee.gov](http://VoteManatee.gov), click on **Register to Vote**. Complete and submit a Florida Voter Registration Application (*online or download paper form*).

## Pre-register to Vote

If you are 16 or 17 years old, you may pre-register to vote. Complete and submit a Florida Voter Registration Application online at [RegisterToVoteFlorida.gov](http://RegisterToVoteFlorida.gov). Then, you may vote in any election occurring on or after your 18<sup>th</sup> birthday.

## U.S. Military / U.S. Citizens Overseas

If you are U.S. military or a U.S. citizen residing overseas, you may find detailed information about voter registration and voting at [www.FVAP.gov](http://www.FVAP.gov) or [VoteManatee.gov](http://VoteManatee.gov) and click on **Vote By Mail**.

## College Students Residing in Manatee County

If you reside in Manatee County for school, you are eligible to register to vote here.

If you choose to register or keep your registration active in your home county, contact your home county's Supervisor of Elections for more information about the Vote-by-Mail process and request options.





# Become a Poll Worker

We need poll workers, this is a paid position! Each election year, we recruit public servants to carry out official election duties at the polls. We are ready to teach you everything you need to know to do the job. Anyone who has worked at the polls will tell you it is one of the most rewarding ways to help your community.

We need poll workers who are bilingual in English and Spanish! To apply, go to [VoteManatee.gov](http://VoteManatee.gov) and click on "Poll Worker" found along the left column in red on the home page. Or you can visit our office to fill out an application, and a poll worker supervisor will contact you. For more information, call our office about becoming a poll worker at 941-741-3823.

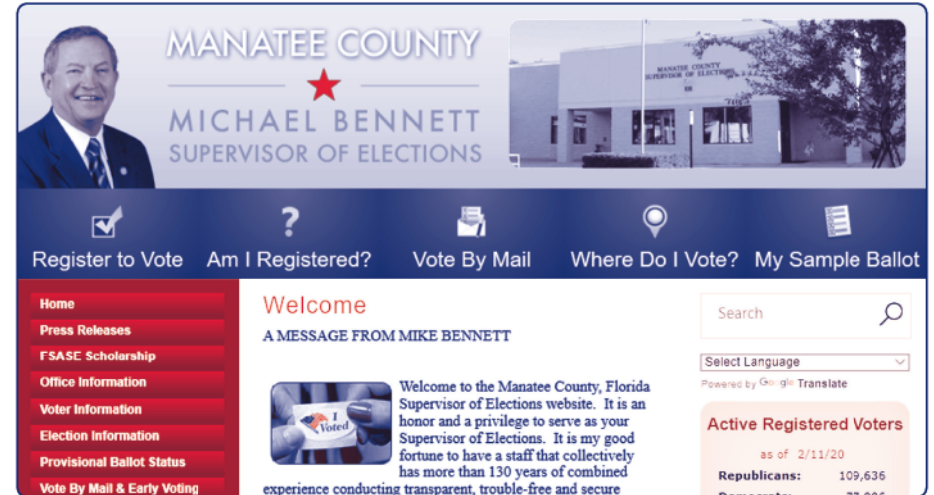
**¡Necesitamos trabajadores electorales que hablen español!** Para someter una aplicación, visite [VoteManatee.gov](http://VoteManatee.gov) y haga clic en *Poll Worker*, o visite nuestra oficina. Contacte a nuestra oficina para más información sobre convertirse en un trabajador electoral.

## Top 5 Reasons to Become a Poll Worker

- 5 You will work, earn money, and enjoy meeting new people.
- 4 You will play a vital role in the democratic process.
- 3 Your community needs you. We will appoint approximately 600+ poll workers this year for our elections to run smoothly.
- 2 It is a great opportunity to help people, serve your community, and have fun doing it!
- 1 You get paid to do a good thing!



# Website



The website, [VoteManatee.gov](http://VoteManatee.gov), makes it easier for the public to get up-to-the-minute election information, including: how to request and track the status of a Vote By Mail ballot, sample ballots; voter registration locations; how to become a poll worker; information on candidates and elected officials; and polling locations. A translator feature is available on our website.

During election cycles, our candidate profile section provides space for candidate photos and biographical information. On Election Night, precinct-by-precinct results will be posted on our home page as soon as results are tabulated.

Our website is 508 compliant for web users that have special needs. In addition, our link to the Division of Elections provides access to election laws and procedures, statewide voter registration statistics and candidates, past election results, voting methods and systems, and the Florida Elections Commission. If you have Internet access, we encourage you to browse our website. E-mail us from our website... we'd love to hear your comments and answer any questions you may have.



## Placement on Inactive Voter Rolls and Removal

If the Supervisor of Elections receives information from the post office or another source indicating a voter's residence may have changed to another address in Florida, the voter's registration record will be changed to reflect the new address and the voter will be mailed an address change notice with a request to verify the new address.

If the information indicates the voter has moved outside the state, an address confirmation final notice will be sent to the voter. All voters who have been mailed an address confirmation final notice and who do not return the form within 30 days will be placed on the inactive voter registration list.

Voters on the inactive list can be restored to active status by updating their voter registration, appearing to vote, or requesting a Vote By Mail ballot. However, after two general (federal) elections from the date the notice was sent, all inactive voters who show no activity will be removed from the registration record and must register again in order to vote. *(See section 98.065, Florida Statutes)*



## Registration Is a Public Record

In Florida, voter registration records are open to the public and may be examined or copied by any person. However, the following registration information is confidential: location of voter's place of registration, location of place of registration update, Social Security number, driver's license number, and Florida identification number. A voter's signature may be viewed but may not be copied. *(See section 97.0585, Florida Statutes)*



## You Can Only Register to Vote in One State

If you own property in Florida and in any other state, you must choose which state you will register to vote. You cannot register to vote in more than one state, this includes ownership of property affiliated with a Community Development District.



## Poll Watchers

Each political party, each political committee with issues on the ballot that they are registered to support or oppose, and each candidate may have one poll watcher in each polling room or early voting area at any one time during an election. Poll watchers must be registered voters in the county and cannot be candidates or law enforcement officers. Each political party, each political committee, and each candidate requesting to have poll watchers must designate, in writing to the Manatee County Supervisor of Elections, poll watchers for each precinct prior to noon of the second Tuesday preceding the election. Poll watchers for early voting shall be requested in writing to the Supervisor at least 14 days before early voting begins. (See section 101.131, Florida Statutes)



## Signature Updates

It is very important for you to keep your signature current with the Supervisor of Elections. Signatures on your registration record are used to verify signatures on petitions and on provisional and Vote By Mail ballots. If your signatures do not match, your petition or ballot will not count. Signature updates for provisional and Vote By Mail ballot verification purposes must be submitted no later than the start of the canvassing of Vote By Mail ballots. Canvassing may start as early as 15 days before Election Day. To update your signature, provide the Supervisor of Elections with a voter registration application indicating a signature update. (See section 98.077, Florida Statutes)



## Early Voting

Early voting will begin no later than 10 days before an election and end on the 3<sup>rd</sup> day before an election. There are several Early Voting locations. For this and more information contact the Supervisor of Elections office for Manatee County at 941-741-3823, or visit our website at [VoteManatee.gov](http://VoteManatee.gov). (See section 101.657, Florida Statutes)



## Violations

### How to Report Election Law Violations

Violations relating to chapters 104 and 106 and section 105.071, Florida Statutes, should be reported by sworn written complaint to the Florida Elections Commission, Suite 224 Collins Building, 107 West Gaines Street, Tallahassee, Florida 32399-1050, 850-922-4539.

The Florida Elections Commission is an entity not aligned or affiliated with the Department of State, Division of Elections. (See section 106.25, Florida Statutes)

Violations of either the National Voter Registration Act of 1993, or the Help America Vote Act of 2002, or any irregularities or fraud involving voter registration, candidate petitions or issue petitions, removal procedures, or voting under the Florida Election Code should be reported in writing to the Division of Elections, Room 316, R.A. Gray Building, 500 S. Bronough Street, Tallahassee, Florida 32399-1050.

All other violations should be reported to the local state attorney. (See sections 97.012(15), 97.023 and 97.028, Florida Statutes)



# Vote From Home!



## Request a Vote By Mail Ballot

### Did you know...

- Any registered voter may vote by mail
- You can request a ballot for a specific election
- You can return your ballot by mail or deliver it to the Supervisor of Elections Office up to 7:00 p.m. on Election Day

### Consider this...

- Voting at home allows you to discuss and consider the best candidate
- You have time to research candidates and issues to make the best decision
- Convenient and saves you time and money

### To Request a Vote By Mail Ballot:

Email the Manatee County Supervisor of Elections and request a Vote by Mail Ballot. Include your name, address, FL drivers license or FL ID or last 4 digits of Social Security number, and date of birth with your email request. Or, go online to [VoteManatee.gov](http://VoteManatee.gov), click on Vote By Mail.

Not registered? Visit our website: [VoteManatee.gov](http://VoteManatee.gov) to learn more about how you can get registered to vote.